

# Autokeeper® Safety Pen Needle

## INSTRUCTION FOR USE

IFU-SPN-01(Rev.2 / 2019.10)

### Autokeeper®Safety Pen Needle Model :

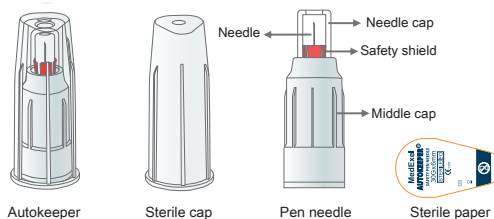
Autokeeper®Safety Pen Needle 31G X 5mm, 6mm  
Autokeeper®Safety Pen Needle 32G X 4mm, 5mm

### Introduction

- Autokeeper®Safety Pen needle is a single-use needle with an automatic safety lock that is designed to reduce needlestick injuries.
- The safety lock indicates that the needle has been used. If the safety shield is not visible, the needle can not be used.
- Please read these instructions before using Autokeeper®.

# MedExel

## 1 Components

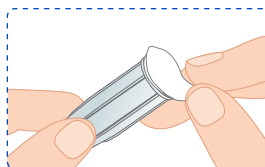


## 2 Intended Use

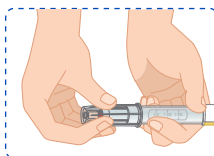
Autokeeper®Safety Pen Needle is intended for use with insulin pens for the subcutaneous injection of insulin. Additionally, the attached safety shield automatically locks in place and reduces the occurrence of accidental needle sticks from the patient end of the needle. The shield also serves to hide the needle before and after injection.

## 3 Usage Method

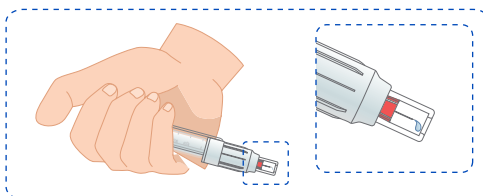
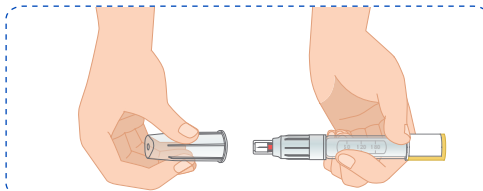
- ① Clean the rubber seal on the pen with an alcohol swab.
- ② Take the sterile paper off from the AutoKeeper®.



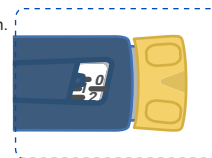
- ③ Holding the sterile cap, push and twist the pen needle straight onto the pen in a clockwise direction until it meets resistance.



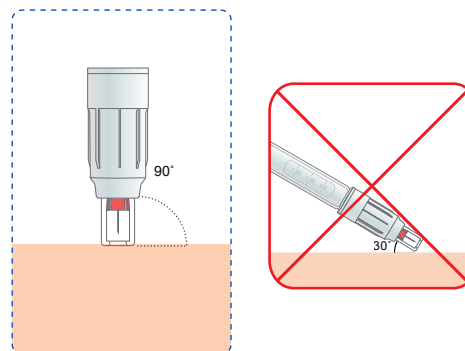
- ④ Pull only the sterile cap straight off and always check the flow in the pen needle by pressing the button on the pen. A drop of liquid should appear at the needle tip.



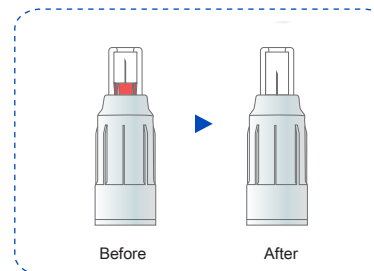
- ⑤ Dial the prescribed dosage on the pen.



- ⑥ Insert the pen needle straight into the skin at a 90° angle until needle cap retracts and the middle cap is flushed with the skin. Keep Autokeeper® needle cap pressed against the skin for at least 6 seconds as shown in illustration, to ensure that the needle stays fully inserted during the injection.



- ⑦ Check whether the safety mechanism is activated automatically when the needle is withdrawn from the skin. If the safety shield locks, the colored safety shield disappear in the middle cap.



- ⑧ Twist the pen counterclockwise without replacing the sterile cap to remove the pen needle from the pen.

## 4 ⚠ Warning

Avoid infection

- ① Do not use the pen needle if the sterile paper become detached from the sterile cap or damaged.
- ② Do not use the pen needle after use-by date.
- ③ Clean the injection site per your usual injection.
- ④ Do not place your fingers on the needle cap after use.
- ⑤ Promptly dispose of the used pen needle.
- ⑥ Keep insulin needles out of the reach of children.
- ⑦ Always use a new needle for each injection.
- ⑧ Do not share your needles with other people which can lead to the transmission of viral diseases like HIV and Hepatitis. You may give other people a serious infection or get a serious infection from them.

## 5 ⚠ Caution Perform the correct injection

- ① If you notice that a drop of liquid disappear at the needle tip, dial 2 units, press the button and check it.
- ② Follow the instructions of the insulin pen you are using.
- ③ Select the dose prescribed by your health care professional.
- ④ Always make the injection at a 90° angle with the skin and do not change the angle until removing the needle in order to prevent from bending or breaking of the needle.
- ⑤ In order to avoid hardening of the skin, change the injection site regularly in consultation with your health care professional.
- ⑥ If you notice that fluid drips out of the needle after it has been removed from the skin, leave the needle in place for an additional 10 seconds after future injections to ensure that the dose is complete.
- ⑦ Use ONLY compatible pens with Autokeeper®.
- ⑧ Always use the pen needle once ONLY as the safety mechanism is activated after use.

## 6 Perform the correct management

- ① Before use, do not lower the outer shield as you use the pen needle now that the safety mechanism is activated automatically.
- ② Store the pen needles in a dry place at room temperature(1~30°C) and keep away from heat and damp conditions.

## Compatible Pens

AUTO PEN / NOVOPEN4 / NOVOPEN5 / NOVOPEN ECHO / HUMAPEN LUXURA / HUMATROPEN / HUMAPEN SAVVIO / JUNIORSTAR / ALLSTAR PRO



**Medexel Co., Ltd.**  
252, Geumgwangosan-ro, Geumgwang-myeon,  
Anseong-si, Gyeonggi-do, 17535 Rep. of Korea  
Tel : +82-31-299-1077 Fax : +82-31-677-8087  
www.medexel.co.kr